

WHAT HAVE THE PAST 20 YEARS TAUGHT US?

With hundreds of graduates and nearly 1,000 students enrolled at three schools, it's sometimes easy to forget that 20 years ago, SEED was just an idea.

We hypothesized that a boarding school's benefits—a rigorous, college-oriented, 24-hour learning environment—could be a game-changer for underserved students who typically lacked access to those resources. To find out if this idea could work, we had to drop everything, including our jobs, and take a leap of faith.

And so many others leapt with us. Politicians leapt with us, passing unprecedented legislation to make the SEED model sustainable. Supporters leapt with us, investing their time and money in this untested idea. And most importantly, parents leapt with us, entrusting us with their children for 24 hours a day, five days a week, for six (now seven) years.

As educators and social entrepreneurs, it's only natural to reflect on what we have learned during this time. The 20 lessons shared by 20 community members in the following pages are not comprehensive of everything we've gleaned. But they do demonstrate the breathtaking challenges inherent to the SEED model—and the incomparable opportunities.

It all comes back to the first lesson listed in this year's Annual Report: the model works. Whatever battles we have had to wage against raccoons (lesson #3) and hurricanes (lesson #19), they are worth it because 94% of SEED graduates have enrolled in college, and they graduate at three and a half times the rate of low-income, first-generation students nationally.

Thank you for leaping with us for the last 20 years. We can't wait to see what the next 20 have in store.

With sincere appreciation and optimism for the future,



Lesley Poole
Lesley Poole
CEO

Eric S. Adler
Eric Adler
Co-Founder &
Board Chair





SEED is all about learning.

We present 20 lessons from the last 20 years.

LESSONS ON: *Establishing the Nation's First Public Boarding Schools*

As CEO, my job is to determine where SEED is going—but that requires first understanding where we've been. We are proud to share 20 of SEED's most powerful lessons, from 20 extraordinary members of the SEED family.

Lesley Poole

#1. The SEED model works....

Eric Adler, SEED Co-Founder & Board Chair

In 1997, children in DC theoretically had access to myriad resources and services: academics, athletics, the arts, college application guidance, mental and physical healthcare, etc. But they were all available independently of one another, disjointed, and often difficult to access. Eric Adler and Raj Vinnakota, SEED's co-founders, believed that if all these services were offered cohesively under one roof, children would flourish—but since it had never been done before, they couldn't be sure it would work.

Almost from the beginning, Eric saw evidence that SEED's wraparound approach was effective: students who had historically struggled began to thrive. But **"the moment when SEED truly shifted from hypothesis to success was SEED DC's first graduation"**—when 100% of seniors had been accepted to college.



From left to right: SEED leaders Eric Adler, Lesley Poole, and Raj Vinnakota

#2. but it takes entrepreneurs...

Raj Vinnakota, SEED Co-Founder

Raj agrees that SEED works, but believes that it takes "exuberant, almost irrational community support;" legislative victories that provide the requisite per-pupil funding; a large, suitable space; and a sustainable operating model (among other things). Not only do these obstacles have to be surmounted year after year, they need to be approached with optimism and a sense of possibility.

To Raj, SEED's community leaders—who embrace challenges like these every day—are entrepreneurs. **"The best definition I've ever heard for 'entrepreneur' is from my friend Eric Adler. It's someone who gets up every morning with 15 things to do, five of which they've never done before, and they figure it out."**



#3. ...an affordable (yet redeemable) space...

Susan Cunningham, Director of New Schools Development, 1998-2005



In 1998, SEED DC scoured the city for an affordable permanent campus. Although it had been long abandoned and repeatedly set on fire, 4300 C Street SE was an interesting prospect because legal restrictions required the building to remain a school, minimizing competition for it.

Unfortunately, it was also a pit—literally. The soil was such that after heavy rain, construction trailers sank into the ground as if on quicksand. The numerous fires had caused structural damage to the concrete. And it turned out the very first dorm resident was a 25-pound raccoon, who stayed on throughout construction. He crashed through the dorm ceiling, shutting down the residential program for a week until he could be humanely captured and evicted.

But no matter how many structural obstacles they encountered, SEED DC still opened on time: **"Experts told us it was impossible to open in 11 months—but we had made a promise to students and families, so we found a way to make it work."**

#4. ...and a love of learning.

Ann Friedman, SEED Foundation Board Chair, 2009-2016



As an educator, Ann Friedman immediately recognized the potential of the SEED model—that the combination of academics, socioemotional support, a safe and nurturing environment, and three nutritious meals a day would be transformational for some students.

But what Ann appreciates most about SEED is the deliberate way that a love of learning is cultivated among students and staff alike. SEED has designed a curriculum that enables students to chart their own reading progress, a hallmark of SEED's guided reading approach. Ann loves the excitement this sense of ownership generates within students to keep reading. Likewise, staff chart their own progress as educators through SEED's Education Program Committee, inspiring them to constantly strive to improve: **"I'm so impressed by [the Education Program Committee's] devotion and dedication. It makes me proud to be part of the SEED family."**

LESSONS ON: Maximizing the Gift of Time

#5. Some of the best learning happens in your community.

Imani Nixon, Junior, SEED DC

Two years ago, Imani was selected as a peer mediator. To her surprise, her classmates really heeded her advice, prompting a revelation: **"I have a lot more power than I thought—even little actions can make a big difference."**

Imani hasn't just gained personal empowerment from her community service; it's also a vehicle for her creativity. This fall, she designed a Compassion Campaign where students wear two-toned bracelets that get flipped to affirm positive behavior.

Imani's commitment to service has also cultivated her leadership skills. Last year, she and her classmates wanted to maximize their evenings at SEED by volunteering three hours every Tuesday and Thursday at the DC Central Kitchen—so they took the initiative to launch a program doing exactly that. Of the many opportunities SEED has provided Imani, perhaps the best has been the freedom and encouragement to bring her own ideas to life.

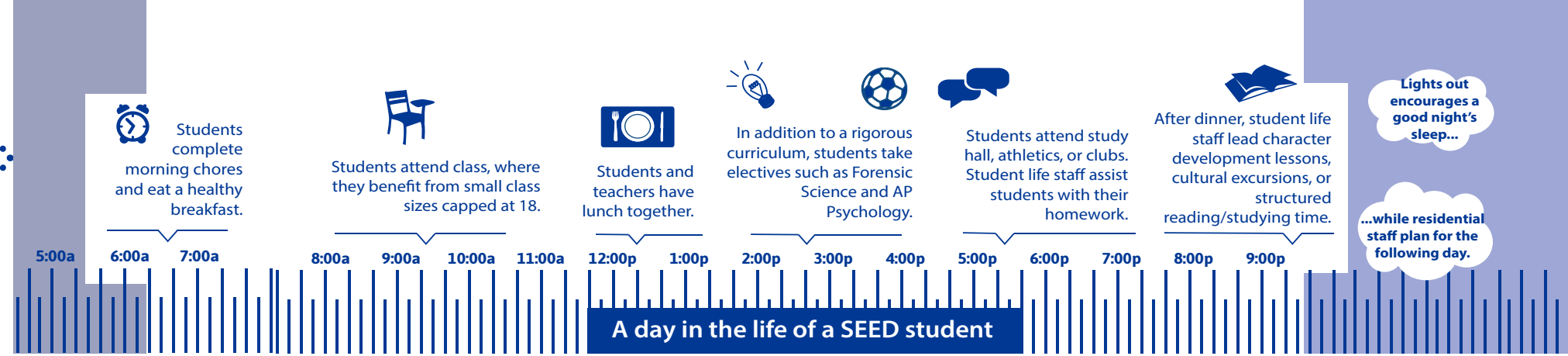
#6. Some of the best learning happens in the summer.

Jalen Jones, Freshman, SEED Miami

Jalen's adventure at the Buffalo Cove Outdoor Education Center in North Carolina was a week of firsts. It was his first time on an airplane; it was his first time camping and canoeing; it was his first time trying certain foods, including tres leches cake and bean burritos; and it was his first time meeting students from other SEED schools.

Ever since Buffalo Cove (which was funded by SEED supporter Nancy Hector), Jalen's been bitten by the travel bug. He's working with other SEED Miami staff to see where he'll go this summer, but he's also got his sights set much further into the future:

"I want to earn my graduate degree in information technology in Germany or Japan."



#7. Some of the best learning happens abroad.

Moises Rangel, Senior, SEED Maryland

When Moises and his classmates went to Honduras for a week, they were tasked with transforming a one-room shack into a proper schoolhouse. But the new environment transformed soft-spoken Moises, too, bringing him right out of his shell. When some of his classmates got discouraged with the manual labor, he offered help and encouragement; he even began opening up to the program's CEO to learn more about Honduras and how to volunteer again.

Since the trip last summer (funded by the Samuel G. and Margaret A. Gorn Foundation), Moises has recommitted himself to taking advantage of other SEED opportunities. Meeting different people in Honduras—and seeing the impact of his service—**"made me want to do more."**

#8. Some of the best learning happens in the dorm rooms.

Willecia Stubbs, Reading Teacher, SEED Miami

To Willecia, **"the academic and residential portions of SEED are two halves of the same whole."** The curriculum she taught last year as an Overnight Resident Advisor (SEED's H.A.L.L.S. program, or Habits for Lifelong Success) was just as rigorous as the lessons she now imparts as a reading teacher.

For example, last year when some of her girls had trouble disagreeing appropriately, she established a before-school debate team. Not only did they learn to listen closely and shake hands when they disagreed, they also learned to form reasoned arguments—with citations! Because SEED's social and academic curricula are so intertwined, it doesn't matter whether Willecia is teaching in the classroom or the dorm: Her students are learning 24 hours a day.



LESSONS ON: *Cultivating Leaders and Community*

#9. *Our network multiplies opportunities to hone best practices.*

Tiffany Evans, Director of Student Life, SEED Maryland

Because the SEED model is unique in the field of education, SEED staff face challenges that other educators don't. For example, other boarding schools, which board their students seven nights a week instead of SEED's five, don't have to worry about reacclimating students to their dorm routines every Sunday evening.

But Tiffany and her fellow SEED leaders don't resolve these issues in a silo. In 2015, The SEED Foundation launched Communities of Practice, where job-alike staff meet monthly to observe one another's schools in action, offer honest feedback, and share best practices on topics like the Sunday evening reacclimation. Tiffany co-leads the Student Life Community of Practice with SEED Miami's Miguel Rivera, which she describes as her "favorite professional experience," because it provides systematized camaraderie and collaboration: **"We don't have to reinvent the wheel, because we have each other."**



#10. *Community can help make meaning out of tragedy.*

Tawara Goode, Jahmal A. Taylor Scholarship Founder

As a Student Life Assistant at SEED DC, Jahmal constantly shared SEED stories with his mother, Tawara. He was an influential role model for his students—which made his untimely death that much more traumatic for them. After Jahmal's passing, one student asked Tawara: "Jahmal said he'd always be there for us. Will you be there for our graduation?"

That question sparked Tawara's idea for the Jahmal A. Taylor Scholarship. Since 2004, one or two SEED DC seniors have received the scholarship every year. The funds can be applied to transportation, books, and other college needs. The scholarship criteria reflect Jahmal's qualities: recipients demonstrate a sense of fairness and compassion, are proud of SEED, and value lifelong learning.

Tawara's family and friends have also eagerly, and generously, donated to honor Jahmal's memory. To date, the scholarship has raised nearly \$240,000. **"Creating this scholarship has been healing for me, because I know Jahmal's spirit would approve."**



2017 SEED Community Member of the Year

Tawara Goode (right) with Markita Ward, a 2008 Jahmal Taylor Scholarship recipient.

The 2017 SEED Staff of the Year Awards

We've learned that leadership and community don't just happen: they're nurtured with thought and care. That's why in 2017 we launched the first-ever, network-wide SEED Staff of the Year awards, recognizing peer-nominated staff for going above and beyond in the following categories:



#11. *When seeking leaders, look first in your own backyard.*

Latrice Thomas, Overnight and Morning Program Manager, SEED Miami



2017 SEED Leader of the Year

The mission initially drew Latrice to SEED, but the people are why she stays—and she wants her staff to feel the same way. When she hires new team members, she asks what their ultimate career goals are so that she can help propel them in that direction. She urges them to present their best lessons and ideas across the network. And no one is more excited when they get promoted, even if it pulls them outside her department.

It's funny, then, that Latrice herself was reluctant to take a leadership role. She thought she already had her dream job as a Student Life Counselor, so she wasn't interested in the Program Manager position at first. But her colleagues saw that she'd be perfect for it and urged her to apply—gently pushing her as she pushes them. She's grateful they did, because this role **"gives me the opportunity to positively impact even more students."**

#12. *One generation's student is the next generation's role model.*

Jonathan Jones, SEED DC '06, Kent State University '12 SEED DC Student Life Assistant

As a graduate, Jonathan Jones knows that SEED students yearn for consistency from their caregivers. Ideally, he thinks staff should stay at least seven years, to follow students from sixth grade through graduation.

But even knowing what a big commitment it was, he felt called to teach—and where better than SEED? These days, he's **"learning from the past and teaching to the future"** and excitedly planning his students' excursions, such as a visit to the Library of Congress.

For the next seven years, Jonathan's students will spend more time with him than with their own families. It's a serious responsibility. But when he thinks of the steady, consistent presence of his own SEED mentors, including Mr. Huggins (pictured), he feels prepared because he's learned from the best.



Jonathan (left) with Romia Huggins, his Student Life Counselor as a child—and current coworker.

LESSONS ON: Defying the Odds to College Success



Millie Harris (right) with SEED Maryland graduate Grace Ayole at the school's 2017 Commencement.

#13. A right-fit college multiplies the odds of college completion.

Millie Harris, SEED Maryland College Counselor

SEED staff begin with the end in mind: college graduation. Beginning in the sixth grade, students are inundated with college tours, college representative visits, college t-shirt days, and college pennants everywhere—so by senior year, they're more than ready to apply to their dream schools.

But SEED's goal is not just college acceptance; it's college completion. We've learned that first-generation college students are four times more likely to graduate when they begin at colleges with generous financial aid, high graduation rates, and plentiful student supports. That's why Millie and her colleagues use every opportunity—including junior and senior seminars, College Prep Boot Camp, and the College Tour for Juniors—to promote universities with a track record of success for underrepresented students. Helping our students discover right-fit colleges doesn't just build college graduates; it builds **"wise consumers and decision makers."**

#14. SEED doesn't end after 12th grade.

Joi Baker Jones, SEED Foundation Associate Director of College Success

When 100% of our first graduating class was accepted to college, SEED celebrated (lesson #1)—but we also knew that our work wasn't done. Nationally, even after low-income, first-generation students defy the odds to graduate high school and enroll in college, only 11% of those enrolled students will ultimately earn their diplomas. Joi says, **"It was clear that SEED needed to ensure that graduates were successful beyond our doors; we needed to go to college, too."**

Enter The SEED Foundation's College Transition & Success (CTS) team. Originally a one-woman shop, seven dedicated staff now serve the ever-expanding ranks of SEED graduates. With CTS's support, SEED graduates have earned their bachelors' degrees at three and a half times the rate of low-income, first-generation students nationally.

Longstanding relationships are key to CTS's success. Joi and the CTS advisors get to know students while they're still in high school; they visit all SEED graduates on their college campuses; and they offer academic, financial aid, and personal coaching through college graduation. When our graduates need guidance choosing their courseload or getting their scholarships processed, they have a trusted expert on speed dial.



Joi Baker Jones (left) with Anscia Buck, SEED DC '12, St. John's University (B.A. '16, M.A. '17)

SEED schools equip students with academic, emotional, social, and financial skills.

SEED graduates own their personal educational path and exercise agency.

Colleges provide quality and accessible resources for underrepresented students.



SEED's College Transition & Success (CTS) team helps students and families navigate the college access and success process. We bridge all stakeholders.

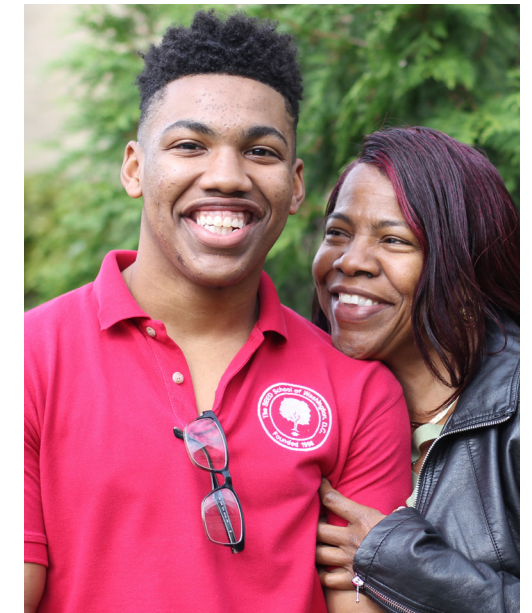
#15. College success is a family affair.

Carlisa Long, Mother of Ja'Ca, SEED DC Senior

Ja'Ca Long is a trailblazer. Next fall, he'll be the first in his family to attend college—which is exactly what his mother, Carlisa, hoped for when she enrolled him at SEED nearly seven years ago.

What she didn't expect was that SEED would make her such an integral part of Ja'Ca's journey to college. This fall, Ms. Long brought Ja'Ca's paperwork to SEED's Financial Aid Night for Families, where College Transition & Success staff worked one-on-one with her and Ja'Ca to finalize his financial aid and scholarship applications.

But there's more to college prep than paperwork. With funding from the Flamboyant Foundation, SEED's Parent College Prep Academy also took Ms. Long and her fellow parents on guided tours of UMBC and Towson—her first ever college visits. Still, they were familiar-looking: **"The college campuses looked so much like SEED—that's how I know Ja'Ca will do well there, too."**



Ja'Ca (left) with his mother, Carlisa.

#16. Our graduates are their own best advocates.

DaShauna Washington, SEED DC '10, Bennett College '14

Self-advocacy is not always easy, but as DaShauna knows, it's especially difficult when you're at a low point—and need it the most.

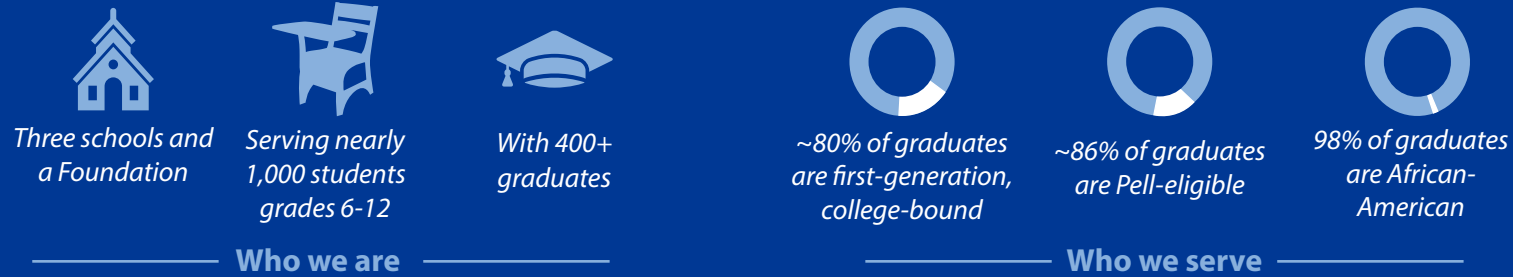
During her sophomore year at Bennett College, she fell—hard—and broke four teeth. In pain and unable to speak or feed herself, DaShauna took a month off from school to recuperate. She was still recovering when she returned to campus and was now a month behind on her schoolwork. But, bolstered by her SEED College Transition & Success advisor, DaShauna persevered, self-advocating with professors and working her way through the material that she missed to successfully complete her semester.

Her proactive, determined approach has served her well beyond college. After graduating, she beat the bushes of her network, landing a job as a Program Analyst at the DC Fire and EMS Department, which she loves. According to DaShauna: **"Self-advocacy leads to self-esteem. It's how you find yourself."**



LESSONS ON: The Big Picture

SEED at a glance:



#17. SEED relationships transcend time, space, and SEED itself.

Tynia Lewis, SEED DC '13, University of Wisconsin - Stevens Point '17

Tynia's junior year at SEED brought personal challenges, but the office of Erika Asikoye, then-Director of Student Support Services at SEED DC, was her refuge. Sometimes they talked; often, Tynia simply sat and did her homework there. When Tynia applied to colleges, Ms. Asikoye provided ample "tough love," rejecting excuses and once tossing Tynia's draft essay in the trash. But that was exactly what Tynia needed: With Ms. Asikoye's unflinching support, Tynia earned the scholarships that financed her college education.

By 2013, they'd both left SEED DC—Tynia for college, and Ms. Asikoye to join the SEED Maryland staff—but they remained as close as ever. There was no question in either of their minds that Ms. Asikoye would make the journey to Wisconsin for Tynia's college graduation because for Tynia, Ms. Asikoye is **"like a mix of a mother and a best friend."**



Tynia at her University of Wisconsin - Stevens Point graduation with Ms. Erika Asikoye, current Director of Student Services at SEED Maryland

#18. Seeing is believing.

Sean Zielenbach, Supporter

Sean has supported SEED since 1998, when his friend Raj Vinnakota shared his cool new project of a public boarding school with him. Sean works in community economic development, so he fundamentally understands that quality schools are necessary to stimulate underserved neighborhoods.

For Sean and his wife Meghan, the most compelling evidence of his return on investment was the 2017 SEED Scholarship Reception. At this intimate gathering of SEED seniors, their families, and the College Transition & Success team, Sean listened to parents reflect aloud on their SEED experience. He found the event overwhelming, in a positive way. **"Some parents were in tears, they were so grateful to SEED. It was terrific to hear their stories."**



#19. SEED translates across the country—with adjustments.

Kara Locke, Head of School, SEED Miami

In 2014, no one could have been better prepared to replicate the SEED model in Miami than Dr. Kara Locke, who had just spent six years as Principal at SEED DC. And certainly some staples of the model translated seamlessly to the third SEED school, such as the constant interplay and partnership between residential and academic staff or college exposure opportunity best practices.

But the different environment also brought challenges and opportunities that were new for SEED. For example, Kara's team developed a more robust English as a Second Language (ESOL) program to better serve Miami's diverse community. The climate also presented unfamiliar hurdles, especially Hurricane Irma, which swept through SEED Miami's dorms this fall and temporarily turned the school into an extended day program. (With support from The SEED Foundation, SEED Miami identified and moved into a new residential space three weeks later.)

One linchpin of SEED that unequivocally carries over, however, is the universal sense of community and investment in one another. Every year at SEED Miami's Dream Ceremony, which officially serves to welcome new sixth-graders, Kara invites a SEED DC graduate to fly down to give the event's keynote remarks. She does this because **"we are all different generations of the same SEED family. It's so inspiring for the Miami students and staff to see the embodiment of their future."**



Lesley (center) and Kara (fourth from left) with three SEED DC graduates at the 2017 SEED Miami Dream Ceremony. Tamia (left) is now a Reading teacher at SEED Miami; Charnice (second from left) and her husband Sean (right) were featured guests. All three are college graduates.

#20. SEED is a family affair.

Lesley Poole, Chief Executive Officer, The SEED Foundation

Speaking of family, for CEO (and longtime SEED leader) Lesley Poole, the SEED story begins and ends with family. Without the support—and agreement—of her own family, she would never have left San Francisco for DC 20 years ago to help launch SEED. And when she looks at the faces that span these pages, she sees not only our leaders, but also their families: spouses, children, parents, siblings, and extended family. For Lesley, it's not just staff and board members who give their all for SEED; their families sacrifice as well. Founders Eric and Raj (lessons #1-2) could never have worked 80+ hours a week without the support of their spouses, Suzanne and Cathy (Cathy even worked as a teacher at SEED DC). Kara (lesson #19) couldn't have left DC to become Miami's Head of School, and nurtured twin baby girls, without her husband Brent.

What about our students? Without the partnership of the families who trust us with their children, particularly in the early years before the model had even been proven, SEED would be nothing more than an interesting idea. And they sacrifice, too. Families give up precious time with their children for seven years in order to give them the opportunity to obtain a college-preparatory education.

Amazingly, the sum of all of this time, support, and sacrifice is family; not just the family we came with, but the new family that we—students, graduates, staff, and supporters—make at SEED. As our graduates often say, **"Once SEED, always SEED."** And it's true. We are the SEED.

SEED Miami's newest sixth-graders at the 2017 Dream Ceremony.

THE HONOR ROLL

Every time a SEED student begins the journey to college graduation, it is only possible because of his or her entire SEED family—teachers, student life staff, parents, peers, and you, their supporters.

We gratefully acknowledge the individuals, corporations, and foundations who have supported

The SEED Foundation,

The SEED School of Washington, D.C.,

The SEED School of Maryland, and

The SEED School of Miami.

Thank you for helping to bring the last 20 years at SEED to fruition.

SEED would not be possible without the visionary leaders who have given the following cumulative gifts and commitments to the SEED network over the last 20 years.

VISIONARIES // \$1,000,000+

Adler Family Foundation, Inc.
Renee and Stephen Bisciotti
Braman Family Charitable Foundation
The Honorable Ann W. Brown and Donald A. Brown
The Morris & Gwendolyn Cafritz Foundation
The Capital Group Companies Charitable Foundation
CityBridge Foundation/Katherine B. and David Bradley
The Edna McConnell Clark Foundation
Ryna and Melvin* Cohen & Marcella and Neil Cohen
The Farmer Family Foundation
France-Merrick Foundation
Ann B. and Thomas L. Friedman
Tucker and Jack Harris
Helios Education Foundation
The William R. Kenan, Jr. Charitable Trust
Robert P. and Arlene R. Kogod Family Foundation
Andrea B. and John H.* Laporte
Lewy Family Foundation
The George Preston Marshall Foundation
Medina Family Foundation
Patricia B.* and Arthur B.* Modell
Marina and David Ottaway
Edwin and Penelope F. Peskowitz
Mitchell P. Rales Family Foundation
Sheila and Michael Ryan
Venture Philanthropy Partners
The Harry and Jeanette Weinberg Foundation, Inc.
The Whiting-Turner Company

LEADERS // \$100,000+

The Abell Foundation
Ronald D. and Anne E. Abramson
Derek M. and Merel Abruzzese
Ellen C. and R. Ware Adams
Deborah and Patrick W. Allender
The Amanter Fund
The Arcana Foundation
The Honorable Ronald E.* and Dawn Arnall
Ash Institute for Democratic Governance and Innovation
Ashoka: Innovators for the Public
Helen Bader Foundation
Bainum Family Foundation
Baltimore Community Foundation
Banyan Tree Foundation
The Batchelor Foundation, Inc.
The Kenneth S. Battye Charitable Trust
Benificus Foundation
Laurinda A. and Bruce J. Berger

Diane & Norman Bernstein Foundation
The Bloomberg Foundation
Bloomberg Philanthropies
Haise R. and Kevin S. Borgmann
The Lynde and Harry Bradley Foundation, Inc.
The Elizabeth A. Brinn Foundation
Antoinette and Edward B. Brody
C. Sylvia and Eddie Brown
Chris D. and Nina M. Buchbinder^
Aviva D. Budd
Carnival Foundation
The Annie E. Casey Foundation
Charter School Growth Fund
A. James & Alice B. Clark Foundation
The Clark-Winchcole Foundation
Clayton Baker Trust
Gina D. and Brooke B. Coburn
Nancy Y. and Martin Cohen
Commonweal Foundation
Concordia Foundation
Louise and Nicholas Cortezi
Melanie Damian
Cora and John H. Davis Foundation
Rosalee and Richard Davison
The Honorable John K. and April Delaney
The DeVito Family Trust
Jolynn and Robert H. Dickinson
Paul J. DiMare Foundation
DLA Piper
Max and Victoria Dreyfus Foundation, Inc.
Louisa C. and Robert W.* Duemling
Educate Tomorrow
Educational Promise Foundation
Lois and Richard* England
The Fancy Hill Foundation
The Fannie Mae Foundation
Fight For Children
The Ford Foundation
The Freddie Mac Foundation
French American Charitable Trust
Elizabeth W. and Michael P. Galvin
The Bill and Melinda Gates Foundation
Lisa Kanengiser and Laurence T. Ginsberg
Henry H. Goldberg and Carol Brown Goldberg
Goldseker Foundation
Barry and Mary Gossett
The Philip L. Graham Fund
The Greater Cincinnati Foundation
Harman Family Foundation
Nancy T. and Robert C. Hector, Jr.
The Hoffberger Foundation
HSBC - North America
Inner Spark Foundation
The Genesis Group

Carolyn Kaplan
Kennedy Family Foundation
Zanvyl & Isabelle Krieger Fund, Inc.
Bruce and Karen Levenson
Lockhart Vaughan Foundation, Inc.
Lumina Foundation for Education
Richard E. and Nancy P. Marriott Foundation
Bob and Virginia McGregor
The Meltzer Group
The Merrill Family Foundation
Merritt Properties Trust
The Miami Foundation
Marc and Marian Milgram
Virginia W. and James M.* Newmyer
The Stavros S. Niarchos Foundation
Nicholson Foundation
John M. and Patricia Noel
The Ohrstrom Family Foundation
The Otto-Whalley Family Foundation
The Philanthropic Collaborative
The Reveas Foundation
Carolyn A. and Joseph E. Rice III
The Rouse Company Foundation
The Scheide Fund
Eric E. and Wendy Schmidt
The Secret
The Shelter Foundation, Inc.
Betsy R. and George M. Sherman
Eileen Shields-West and Robin West
The Skoll Foundation
Solid Rock Foundation
Sarah and David J. Steinberg
The Aaron Straus & Lillie Straus Foundation
Mary Sullivan Gross Scholarship Fund
Sunrise Foundation
Dorothy A. Terrell
Tri-Mix Foundation
Antoine W. and Emily B. Van Agtmael
Kate and Brad Vogt^
The Walton Family Foundation, Inc.
George Wasserman Family Foundation
The Oprah Winfrey Foundation
Wright Family Foundation
Michelle J. Yee and Reid Hoffman
Judith H. and Leo E. Zickler
Sean Zielenbach and Meghan Henning

*Deceased ^Matching Gift Donor

We gratefully acknowledge the following donors who contributed to SEED from July 1, 2016 - June 30, 2017.

\$1,000,000+

The William R. Kenan, Jr. Charitable Trust

\$500,000 - \$999,999

Braman Family Charitable Foundation

\$250,000 - \$499,999

The Batchelor Foundation, Inc.

Helios Education Foundation

\$100,000 - \$249,999

Chris D. and Nina M. Buchbinder^

The Capital Group Companies Charitable Foundation

Carnival Foundation

Paul J. DiMare Foundation

Ann B. and Thomas L. Friedman

Elizabeth W. and Michael P. Galvin

Nancy T. and Robert C. Hector, Jr.

Kennedy Family Foundation

Robert P. and Arlene R. Kogod Family Foundation

Medina Family Foundation

Edwin and Penelope F. Peskowitz

Dorothy A. Terrell

Tri-Mix Foundation

\$50,000 - \$99,999

Adler Family Foundation, Inc.

Eric S. and Suzanne M. Adler

James B. and Esthy Adler

The Kenneth S. Battye Charitable Trust

A. James & Alice B. Clark Foundation

Tucker and Jack Harris

Joseph Samuel Isicoff Memorial Fund

Laura Adler McGrew and Lindley C. McGrew

Marc and Marian Milgram

Charles and Francene Rodgers

James C. and Norma I. Smith Foundation

Solid Rock Foundation

\$25,000 - \$49,999

Haise R. and Kevin S. Borgmann

Aviva D. Budd

Concordia Foundation

Louise and Nicholas Cortezi

Audrey B. Drossner

The Samuel G. and Margaret A. Gorn Foundation

Deborah and Frank Jimenez

Gregory Klassen

Andrea B. and John H.* Laporte

Bruce and Karen Levenson

Lawrence C. and Melanie F. Nussdorf

Eileen Shields-West and Robin West

Mary Sullivan Gross Scholarship Fund

Antoine W. and Emily B. van Agtmael

Kate and Brad Vogt^

Sean Zielenbach and Meghan Henning

\$10,000 - \$24,999

Ronald D. and Anne E. Abramson

Derek M. and Merel Abruzzese

Ellen C. and R. Ware Adams

BB&T

Gina D. and Brooke B. Coburn

The Community Foundation for the National Capital Region

Melanie Damian

The Eliasberg Family Foundation, Inc.

Flamboyant Foundation Inc.

C. Boyden Gray

Israelson Family Foundation

JBG Smith

Patricia H. and Mark K. Joseph

Carolyn Kaplan

Jonathan Legg

Glen S. and Cheryl W. Lewy

John W. and Holly Madigan

The Meltzer Group

The Merrill Family Foundation

The Miami Foundation

Morgan Stanley Global Impact Fund Trust

Israel & Mollie Myers Foundation, Inc.

Virginia and James* Newmyer

John M. and Patricia Noel

Mark and Elizabeth Ordan

Pillsbury Winthrop Shaw Pittman, LLP

Pricewaterhouse Coopers

Joseph E. Rice III and Carolyn A. Rice

MaryAnn and Gordon Rich Family Charitable Fund

Andrew Richman

Scott and Stephanie Rostan

The Shelter Foundation, Inc.

Michael Sonnenfeldt

James and Trevecca M. Terrile

George Wasserman Family Foundation

The Whiting-Turner Company

Christopher D. Young^

**Deceased ^Matching Gift Donor*

We put extreme care into ensuring the accuracy of our honor roll list. If you have any questions or comments about how your generous gift appears here, please contact Alisha Huntley at ahuntley@seedfoundation.com or 202.785.4123 x58

\$5,000 - \$9,999

The Adams Foundation

BGE, an Exelon Company

Katherine B. and David Bradley

Canter Family Foundation

Carolina and Christopher V. Damian

Louisa C. Duemling

Ed Reed "Eye of the Hurricane" Foundation

Claire S. Frankel

Dean C. Garfield and Chanda Y. Tuck

Tawara D. and Jesse Goode

Audrey F. and James P. Gorter

Kelly T. and William D. Hardy

Intel Corporation Charitable Match Trust

Nancy L. Lane

Harry P. and Elizabeth Lebow

Limitless La Vie Corp

Marks, Thomas and Associates, Inc.

Marc E. Miller and Stephanie deSibour

James W. Moeller and Marsha MacBride

Wesley and Dawn Moore

Luis R. and Joanne Perez

Martha & Philip Sagon Family Foundation

Julie Rothman and Scott Sherman

The Rothschild Charitable Foundation, Inc.

Lisbeth B. Schorr

Anne C. Sherrerd

Robert H. Smith Family Foundation

United Way of Central Maryland

Frank Vogl

The Vogl Foundation

Nanar and Tony Yoseloff

\$1,000 - \$4,999

Anonymous

Linda Abraham

Action for Healthy Kids, Inc.

Anita and Ken Adams

Earl Adams, Jr. and Tamara Devieux-Adams

Aladdin Food Management Services, LLC

Vincena M. Allen

Denise and Philip M. Andrews

Jennifer Armstrong

James L. and Gillian W. Athey

Preston G. Athey

J. Randolph and Katherine Babbitt

Baltimore Community Foundation

Baltimore Janitorial Supply

Stanley Barg

Patricia and Charles C.* Baum

Carl Baylin

Michael Blake

Beaty Family Fund

Seth and Helen Becker

Dorothy G. Bender Foundation

The Benevity Community Impact Fund

Ellen C. Benson

Adam K. Bernstein

Michael Braun

Richard Brekka

M.F. Brewer

Bridgewater Associates, LP

Edward and Barbara Brody

John and Jacolyn Bucksbaum Family Foundation

Richard S. and Shannon Burch

Josh Burke and Emily S. Baum

Butler Security, Inc.

Paul Cain

Meredith and Joe Callanan

John R. Chabbott

Anne S. and J. William Charrier

Steven G. Check

David and Katherine P. Cheek

Clark Construction Group, LLC

John H. Claster

Douglas Clemens and Tonie Kline

David L. Cohen

William & Sylvia Cohen Family Fund

Helen A. and Earl Colson

Combined Charity Campaign

Lucy and Brian Conboy

Constellation Energy Group

Leslie K. and Steven M. Coren

Toussaint Crawford

Barry and Jennifer Crosthwaite^

Jennifer J. Curran

Canute Curtis

Jennifer S. and James S. Denham IV

The Julius & Blanche Diener Foundation, Inc.

Cheryl L. Dorsey

Tiffany Evans

Exelon Foundation Matching Gifts Program

Rod Fallow

Steven Fedder

Vasco Fernandes

David Fields

Bobbi and Barry J. Freedman

C. W. William and Bethany Frick

Tom Gallagher

Richard D. Gluck

Katja Goldman

Pamala A. Gooden

Jason and Allyson Gordon

The Gabel Foundation

Chyla Graham

Jack E. Hairston, Jr.

The Dot and Lam Hardman Family Foundation

Susann H. and Ron Haskins

Susan Hepler

Hickrill Foundation, Inc.

The Higgins-Trapnell Family Foundation

Douglas M. and Catherine O. Hoffberger

Hogan Lovells US LLP

Paula C. and Paul Hollinger

Allison M. Holt

Lee Hoyt and Pierce B. Dunn

Information Technology Industry Council

We gratefully acknowledge the following donors who contributed to SEED from July 1, 2016 - June 30, 2017.

\$1,000 - \$4,999 continued

Investor Solutions Inc.
 Marvin Israelow
 Roberta Rust Jeffries
 Peter A. Joseph
 Karen Kaub
 Mark and Lisa L. Kaufman
 Therese M. Kelly and Peter Kovac
 Karim and Jocelyn Khalifa
 Heather Klink and Catherine Glose
 Ellen and Charles Knudsen III
 Victor Lebow
 Gerald Bruce Lee
 Legum Foundation, Inc.
 Patricia Locke
 Ludwig Family Foundation
 Martin Margulies
 Joseph Martel
 Martin Screen Printing and Sign Supply, Co. Inc.
 MBIA Inc.
 Laurence H. and Florence K. Meyer^
 Richard and Jill Meyer
 Doug Miller
 Rosalia G-H Miller and Richard Miller
 Laura R. Moore
 Morgan Stanley Service Group, Inc.
 Marcia L. and Charles E. Moylan, Jr.
 Ann and Robert Mueller
 Munimae Foundation, Inc.
 John A. Murison
 Donald S. and Gail S. Myers
 Elsa Newmyer and Larry Forrester
 Christopher M. Niemczewski and Elise Hoffman
 Donald J. and Dayl Normandt
 Donald D. O'Neal and Sally Johnston O'Neal
 Nancy and Morris W. Offit
 Courtney and R. Scott Pastrick
 G. Scott Paterson
 Breon Peace and Jacqueline Jones-Peace
 Pfister Energy of Baltimore, LLC
 Lesley Poole
 Irma C. Poretzky
 Lester Poretzky Family Foundation, Inc.
 Ronald Raider
 Randstad USA
 Sean M. and Anne Regan
 Clyde Relick and Juliana M. Davis
 Susan Ridder
 Steven Robinson
 Chris Rosenthal
 Murray Rosenthal
 S. Kann Sons Company Foundation
 Andy Sack
 Deborah and Michael D. Salzberg
 Louise S. Sams
 Schechter Family Foundation TR
 Schwab Charitable
 Security Equipment Co.
 Bradford W. and Jill C. Seibert

Rosalie Sellman
 Ronald and Kathryn Shapiro
 Earle & Annette Shawe Family Foundation
 Stephen D. and Gail Shawe
 Shane and Caroline Smith
 Sandra C. and James T. Smith, Jr.
 Ruth Swanson
 The T. Rowe Price Program for Charitable Giving
 T. Rowe Price Associates, Inc.
 T. Rowe Price Foundation, Inc.
 Alan and Judith W. Tapper
 Tiger 21 LLC
 Carlos P. Vaz
 Verizon Foundation
 Rajiv Vinnakota and Catherine J. M. McKenna
 Timothy J. and Ellen S. Voelkel
 Paul A. Volcker and Anke Dening
 Weathertrol Heating and Airconditioning
 James H. Webb
 Jeff and Debi Wechsler
 Frank and Denie Weil
 Paul T. White
 Kathy and William Whiting
 Jessica L. Wilson
 World Presidents Organization

\$500 - \$999

A&D Security Consultants II
 Frances P. Allegra
 Amina Anjum
 John Baum
 Josh and Blandy Becker
 John and Mary Ann Beckley
 The John and Mary Ann Beckley Charitable Fund
 Bruce J. and Laurinda A. Berger
 Richard and Suzanne Beyda
 Sandra Braxton
 Samuel W. Byram
 Doris and John Cameron
 Mary and Armeane Choksi
 Tamiko L. Colonel
 Keniq Coney
 Penelope Cordish and Archie Golden
 Nancy Cunningham and Tom Stockdale
 Susan Cunningham and Philip Eliot
 Carol A. Dalton and Peter M. Flynn
 Brian DeGrosso
 Do More 24
 Jules Dorner
 Ronald and Julie Druker
 Kristin Foti
 Anne Freedman
 Jennifer C. Galambos
 Patrick Gannon
 Yardly C. and Burton C. Gray, Jr.
 Gerald P. Halpern
 John and Barbara S. Heffer
 Martha Hirschfield and William B. Saletan

Sonya Hopson
 David A. and Harriet Hutzler
 Joel & Carol Jankowsky Foundation
 Erika and Thomas J. Kenney III
 Pedie and Robert S. Killebrew, Jr.
 Dawn Kirstaetter
 Georgette D. Kiser
 Arnold S. Kling
 Carol D. and Martin P. Kolsky
 Nathan K. Kotz
 James P. Lawless
 Karen and Gary Levi
 James M. and Elizabeth L. Lewis
 Hugh D. McGuirk
 David P. and Gail S. Mixer
 Scott L. Molinaroli and Lyn Aborn
 Ronald M. Naditch
 Kinnari Patel
 Anne and John Patterson
 Mary Catherine Person
 Henry and Anne Reich Family Foundation

Kevin Ridgely
 JoAnn Robinson
 Stanley and Jane B. Rodbell
 Eleanor T. Rosenfeld
 Harold and Linda J. Rosenson
 H Rubenstein Family Charitable Foundation
 Javier San Miguel
 Doug Sandor
 Jennifer Saulino
 Jacob S. Shapiro Foundation
 Allison and Brent Shaw
 Gilda Sherman
 Timothy Stranges and Rosanna Coffey
 Patrick A. Sullivan
 Sriramulu and Sreedevi Vinnakota
 Vin and Cheryl L. Weber
 Mary E. Weinmann
 The Weinstein Mitzvah Foundation, Inc.
 R L Widmann
 Christy Wise and Robert A. Axelrod

Pictured: The 2017 SEED Scholarship recipients at their annual Scholarship Reception. (This event was described by Sean Zielenbach in lesson #18.) The SEED Foundation offers gap scholarships to students to cover the difference between college tuition and financial aid.



The Honor Rolls on...

For an entire list of all SEED supporters from the last year, please visit the annual report online at www.seedfoundation.com.

We gratefully acknowledge the following donors who contributed to SEED from July 1, 2016 - June 30, 2017.

\$250-\$499

James Alberg
Deborah and Patrick W. Allender
David Attis
Gary L. Attman
Nancy Blanks
Michael A. Bowen
Ann W. and Donald A. Brown
Stacy F. Brown
Jennifer Bryant and Bruce I. Friedland
William Canida
Evelyn J. Chatmon
Edward M. Cohen and Anne Bakstad
Edwin I. and Nancy D. Colodny
Maudine R. Cooper
Antwain Coward+
Elijah E. Cummings and Maya Rockeymoore-Cummings
Pyper Davis and Eric Imperial
Jan and Charles Day
Exelon Employee Giving Campaign
Catherine J. Everett
Linda Y. Flake
Florida Power Light
Nancy M. Folger
Deborah S. Freedman
Eleanor Frias and Samuel Robfogel
Shernett S. and Rupert Gardener
Jeff Garigliano
Martin B. Goldstein
Robert J. Gordon
Ashley and Ronald E. Grant
David R. and Susan Haas
Stacey W. and Harry D. Halpert
Anthony T. Hawkins and Paula Rome
Charles W. Henstenburg and Charla M. Rath^
Regenia Hicks
Alan S. Hock
Jan Hodges and Ben Francavilla
The Hoffberger Foundation
Herbert and Sylvia Horowitz
A. Stephen and Margaret Hut
Danielle Jackson
Barbara and Boisfeuillet Jones
Kaplan Consulting Partners, Inc
Connie and Dennis Keller
Alexander Koutta
Leslie and Bruce Lane
Brad H. and Jodi Lebow
Mimi Legaspi
Russell and Miriam Lindner
Michael K. Marshall
Huey Merchant
Paul and Yvonne Mirengoff
Joshua Mitchell
Hopi W. Moodie
NRG Energy, Inc
Betty Ann Ottinger
Andrea R. and Andrew W. Potash
Gregory Pratt

David and Tammy Reymann
Carole T. and Edwin J. Rigaud, Jr.
Ray Ritchey
Doug Robinson and Lisa Naeger-Robinson
John and Whitney S. Rosenthal
Charles and Barbara Rossotti
Ronald L. and Olivia Rothstein
Ruth Shaw, Inc.
Mary E. Sabbatino
Liz Lavette Shorb and Bob Shorb
Albert H. and Shirley Small
Dwayne G. Sumpter
Richard Sussman
Gillian Thomas
Theresa and Dick Toohey
Traveling Players Ensemble
Caryn W. and Steven A. Wechsler
Jane G. Weiman
Tom and Carol Wheeler
Stephen Whisnant
Gary D. and Diane K. Wilson
Alexander and Nicole Wixted

Under \$250

Charles B. and Joan Abelson
Marilyn Abrams
Stephen Abseck^
Gail F. Adams
Pamela M. Allen
Amazon Smile Foundation
Andy Amrhein
William and Gail W. Andrus
Giovanna Angulo
Anonymous
Erika Asikoye
Brita Askey
Gilly and Robert Babb
Bianca Bacarreza
Monica Bacican
Beverley Badley
Arden and Ellen* Baker
Garrni Baker+
Joi A. Baker Jones
Michael Balenson
David B. Ball
Laurie Ballenger
Andrew A. Bank
Caleb Bank
Bettye Barcan
Teresa Beauchamp
Anthony Belcher
Deborah E. Berkowitz
Joan Berman
Kay Berney
Robert F. and Joyce L. Beyer
Anjali Bhatt
M. Barry and Ilene Blum
C. Edward and Susan S. Bollinger
Donald and Helene Bookstein

Carla J. and Louis L. Bopst, Jr.
Mark D. Brabrook
Steven and Susan Bralove
Carl W. and Jennifer M. Brieske
Ann and Jonas Brodie
Chelsea Brown
Christina Brown
Douglas L. and Marisa C. Brown
Nancy Brown
Tanya Brown
Ralph and Coralie Bryant
Amelie B. and B. Bernei Burgunder, Jr.
Kimberly Butler
Douglas and Joan Calem
Joy Campbell
CANUSA Corporation Charitable Fund
Guy Carmeli
Janice Carroll
Emilia Casale
Elizabeth and David Cateforis
John and Joan Cattie
Maria Ceballos-Zagales
James Chambers
Robert Charbonneau
Marzell L. Chase
Ratnam Chitturi
Justin Chiu
Joan Christopher
Julia Clemens
Leslie and Raymond C. Clevenger III
Tracey Clifton
Corin Collier
Patricia Cook
Ida F. Cooper
Yolanda A. and William H. Copeland, Jr.
Gerald Cope
Anne E. Crawford
Brandon Cruz
The Cryor Group, LLC
Erika and Michael Cryor
Didi and Walter Cutler
Robert de la Fuente
Donna and Stan Deardorff
RoseAnn DeFranco
Laura Delaney
Michael DePinto and Terry T. Mathias
J. William Doolittle
Michael H. and Julia Dulan
Lisa Dunkley
Virginia Emmons McNaught and Brett McNaught
Alfonso Espada
Gail Evans
Lorraine Evans
Matthew and Jaime Ewald
Christopher Fahey
Alexa and Nauder Faraday
Lisa Fedder and Christopher Baer
Jerome and Alberta E. Fennoy
Savonne Ferguson

Sade Ferrell
Katherine Fink
Lindsay P. and Bruce Fleming
Samantha Foti
Anthony B. Francavilla
William and Janet Frank
Jordan Frasier
Jay W. and Linda N. Freedman
Melissa N. Freedman
Jakeia Freeman
Brianna and Reid Freiheit
Elizaveta Freinkman
Jeffrey and Maxine Freund
David H. Goode and Susan C. Frey
Hannah Frishberg
Dhana Gahagan Diaz
Louis Galambos
Kathryn Gallagher
Ayana Gallego+
Nailah Gallego+
Ann F. Gamse
Antoine M. and Carol J. Garibaldi
Linda K. Gebric
Judith A. and David C. Geiman, Jr.
Anna Gelpert and Bruce Spiva
Kathleen M. and Joseph P. Gesue, Jr.
Giant A+ School Rewards
Michael and Jane Glick
Belinda Gordon-Battle
James Grady and Bonnie Goldstein
Sharon Grant
Sherry Gratz
Maritza Graver
Tiffany Graver-Smith
Bob and Martha Gross
Joanna Gross
Jan and Sue W. Guben
Joseph H. and Merna C. Guttentag
William M. Hardt III
John A. and Nancy Harris
Talia Harris+
Tara J. Harris
The Harris Family Charitable Trust
Harris Teeter, Inc.
Princess Harrison
James Harry
Delbert D. Hartley and Maria Valls
Thurinton Harvell
Sarah Hass
Morris T. Haywood and Sonja Harris Haywood
Carol T. Henkle
Julie Hess
Margaret L. and Robert Heubeck, Jr.
Phyllis Hildebrand
Eriel Holloway+
Marjorie E. Howard
Shahen Huda
Mary E. Hughes
R. Matthey Humphreys

We gratefully acknowledge the following donors who contributed to SEED from July 1, 2016 - June 30, 2017.

Under \$250 continued

Ellen Humphries
Antoine and Alisha Huntley
Donald Hutchinson
Wilbur C. and Vivian H. Jackson
Jean James
JPMorgan Chase Bank, N.A.
Kendra Johnson-Tesch
Rosalyn Jonas
Sharon C. Jones
Barbara Junge
JustGive
Henry Kahn
Marvin L. and Madeleine G. Kalb
Peter and Melinda Kaminsky
Christopher Kandik
Leonard and Gail Kaplan
Jeannette Karpay
Gail and Leon Katz
Andrew Kaufman and Marla Alhadeff
Roxane K. Kaufmann and Neal Fitzpatrick
Kathleen C. and William F. Kean
Nadine D. and Andre Kearns
Ashley Keeler
Nicole E. King
Gary Klein
Lili Knize
Mark Koenig
Louis Kovacs, Jr.
Vivian B. Kramer
Howard G. and Rochelle H. Kristol
Patrick W. Kurtz
Erwin and Aba Kwawu
Michael Landon-Murray
Bruce S. and Ann E. Lane
Watikqua Lange
Steven A. and Charla H. Lerman
Marcia Levi
Martin A. and Rhona L. Levin
Laurie Liskin
Frank W. Lloyd and Elizabeth L. Athey
Kara and Brent Locke
Gay P. Lord
Andrea Loring Smith
Pehr S. and Carolyn H. Luedtke
Jennifer Lyon
Rebecca Lyons
Judi Mahorner
Michal Makarovich
Kaitlyn Maloney
Richard and Marsha Manekin
Ann Walker Marchant
Jonathan and Nandita Marks
Andrew D. and Eva P. Martire
Robert G. and Mary Mayer
Dennis C. McAndrews
James L. and Martha McCarthy
Patricia and Dennis McDougale
Lori McGhee

Daniel W. McKinnon III
Donald W. and Britta S. McNemar
Denise Medley
Meriwether Godsey, Inc.
John and Julie Messenger
Sarah Michelson
Elizabeth Middleton
Karen Middleton
Joni Miller
Julia Miller
Emily Mirengoff
Laura Mirengoff
Allison Mitchell
Jasmine-Simone Morgan and Christopher D. Morgan
Jennie and Evan Morrison
Steven Mull
Susan D. Murphy
Kuchi S. and S. B. Murthy^
Naomi M. Myers
Joan M. Naake
Stephen A. and Kathleen M. Nelick
Herbert and Stephanie Neuman
Maxine and Arnold A. Nickelsberg
Amanda O'Connor
Henry R. O'Connor
Jo-Ann Mayer Orlinsky
Vera K. and Frederick L. Orthlieb
Luna Otera
Rebecca Outtersson
Nicole Padro
Ravikiran Paidipally
Mary Panetta
Krishan J. Patel and Alaka Bhatt-Patel
William L. and Nancy Paternotte
Carol A. Patrick
Philomena Paul
Francesca Peckman and Kenneth Kraus
A. Samuel and Beverly Penn
Adrienne Penna
Helen and Steve Percy
C. Gregg and Julie A. Petersmeyer
DeVesco Pierre
Caroline R. Pinkin
Pfizer Foundation Matching Gift Program
Patricia Phares
Leonard Powell
Leah F. Prandi-Abrams
Martha Rabbitt
Charles R. Ragan
George Ragovis and Nina Scribanu Ragovis
Brian Rahaman
Edith N. Raphael
Razoo Foundation
Richard and Rozelle S. Rennert
Kellie T. Rice
Richard and Carolyn H. Richardson
Arnold and Alison Richman
David S. Rider
Maria J. Rodriguez

Laurie Rome
ML Rooney
Ellen Rothman
Melinda Salaman
Donald F. and Donna Samick
Laura C. and Thomas Sander
Peter and Carol Saucier
Carlota and Neil Schechter
Katherine Schirano
Dara and Charles Schnee
Jerold E. and Katharine S. Schneider
Karen and Milton Schneiderman
J. Jonathan and Carla Schraub
Anitra Scott
Ann and Paul F. Scott, Jr.
Barbara W. Searle
Joyce K. Sebian
Joseph M. Sellers
Fereshteh Shahabi and Ram Capoor
Alexander and Patricia C. Shakow
Angela Shuford
Marieke Shukla
Robert Siedler
Pamela S. Silberman
Beth Silverman
Jay Silverman and Lois J. Godel
Ava J. Simpson
Rosa and Howard Sirota
Robert N. and L. J. Snyder
Marjorie H. Sonnenfeldt
Lillian Sparks
Peter Spivack
Jacqueline Suzanne Stark
Randall Stewart
Marybeth and Charles Stockman
Thomas Stosur
Jameson Studwell
Palanisamy Sundaram
John P. Swope Jr.
Maria Tarazona
Stanley and Joni Tate
Dwight Taylor
Mona L. Tekchandani and Vikram Krishnan
Stanley Tempchin
Emily and John Templeton
Isaac Templeton Jr.
Latrice Thomas
Kenneth Thompson
Otho and Rosemarie S. Thompson
Vernice M. Thompson
Nina Totenberg and H. David Reines
Donna Triptow
John Trombly
Edwin M. and Tracy P. Truman
Jonathan C. Tucker
David and Nora B. Tulchin
Yolanda Turner
Benjamin Umans
United Health Group Employee Giving Campaign

Alden T. Vaughan
Melissa Visconti
Lauren Vollmer
David B. Waghelstein and Ellen B. Kagen
Reagan Walker
Sheila and William Walker
Ed and Joanne Wallach
Margaret Warner
Derik Washington
Faith Watkins
Wayne R. and Carmelita J. Watkinson
Andrew F. Watson
Sid Weiss
Debra E. and Craig E. Weller
Peter White
Richard and Aliya White
Sheryl N. White-Scott
Faith and Stephen F. Williams
Gidget Williams
Tony Williams
James T. Wilson
Robert Wilson
Steven A. Winkelman
John G. and Judith F. Worm
Ruth Worthington
Alex Wrenn
Darien K. and Laura Wright
Nadia Yovanovitch
Ivy Young

FINANCIALS JULY 1, 2016 - JUNE 30, 2017

We are proud that our organization has been financially stable for 20 years. Our staff works hard to ensure that our supporters' donations and resources directly fuel what matters most: student outcomes.

Independent Auditor's Report



RSM US LLP

To the Board of Directors
The SEED Foundation, Inc.
Washington, D.C.

Report on the Financial Statements

We have audited the accompanying consolidated financial statements of The SEED Foundation, Inc. and Subsidiaries (the Foundation), which comprise the consolidated balance sheet as of June 30, 2017, and the related consolidated statements of activities and cash flows for the year then ended, and the related notes to the consolidated financial statements (collectively, the financial statements).

Management's Responsibility for the Financial Statements

Management is responsible for the preparation and fair presentation of these financial statements in accordance with accounting principles generally accepted in the United States of America; this includes the design, implementation and maintenance of internal control relevant to the preparation and fair presentation of financial statements that are free from material misstatement, whether due to fraud or error.

Auditor's Responsibility

Our responsibility is to express an opinion on these financial statements based on our audit. We conducted our audit in accordance with auditing standards generally accepted in the United States of America. Those standards require that we plan and perform the audit to obtain reasonable assurance about whether the financial statements are free from material misstatement.

An audit involves performing procedures to obtain audit evidence about the amounts and disclosures in the financial statements. The procedures selected depend on the auditor's judgment, including the assessment of the risks of material misstatement of the financial statements, whether due to fraud or error. In making those risk assessments, the auditor considers internal control relevant to the entity's preparation and fair presentation of the financial statements in order to design audit procedures that are appropriate in the circumstances, but not for the purpose of expressing an opinion on the effectiveness of the entity's internal control. Accordingly, we express no such opinion. An audit also includes evaluating the appropriateness of accounting policies used and the reasonableness of significant accounting estimates made by management, as well as evaluating the overall presentation of the financial statements.

We believe that the audit evidence we have obtained is sufficient and appropriate to provide a basis for our audit opinion.

Opinion

In our opinion, the financial statements referred to above present fairly, in all material respects, the financial position of the Foundation as of June 30, 2017, and the changes in their net assets and their cash flows for the year then ended in accordance with accounting principles generally accepted in the United States of America.

Report on Summarized Comparative Information

We have previously audited the Foundation's 2016 financial statements, and we expressed an unmodified audit opinion on those audited financial statements in our report dated November 29, 2016. In our opinion, the summarized comparative information presented herein as of and for the year ended June 30, 2016, is consistent, in all material respects, with the audited financial statements from which it has been derived.

RSM US LLP

Washington, D.C.
December 14, 2017

THE POWER OF BEING UNDERSTOOD
AUDIT | TAX | CONSULTING

The SEED Foundation, Inc. and Subsidiaries Consolidated Balance Sheet Fiscal Year-End: June 2017 (with Comparative Totals for 2016)

	2017	2016
Assets		
Cash and cash equivalents	\$ 6,561,740	\$ 10,761,928
Investments	938,321	810,396
Receivables	3,735,972	1,178,782
Prepaid expenses	223,535	249,711
Restricted cash	1,006,783	998,528
Promises to give, net	1,459,103	1,817,548
Property and equipment, net	61,003,292	62,376,542
Due from SEED School of Miami	870	298,324
	<u>\$ 74,929,616</u>	<u>\$ 78,491,759</u>
Liabilities and Net Assets		
Liabilities:		
Accounts payable and accrued expenses	\$ 1,506,591	\$ 1,489,472
Refundable advances	3,197	3,197
Deferred rent	39,004	64,884
Capital lease obligation	57,639	96,414
Due to SEED School of Miami	-	25,000
Loan payable	690,112	2,318,759
Bonds and notes payable	24,385,631	25,928,368
	<u>26,682,174</u>	<u>29,926,094</u>
Commitments and contingency (Notes 6, 9 and 10)		
Net assets:		
Unrestricted:		
Undesignated	41,854,747	43,666,714
Board designated	619,281	614,281
	<u>42,474,028</u>	<u>44,280,995</u>
Temporarily restricted	5,673,414	4,184,670
Permanently restricted	100,000	100,000
	<u>48,247,442</u>	<u>48,565,665</u>
	<u>\$ 74,929,616</u>	<u>\$ 78,491,759</u>

The SEED Foundation, Inc. and Subsidiaries
Consolidated Statement of Activities
Fiscal Year-End: June 2017
(with Comparative Totals for 2016)

The SEED Foundation, Inc. and Subsidiaries

Consolidated Statement of Activities
Year Ended June 30, 2017
(With Comparative Totals for 2016)

	2017				2016 Total
	Unrestricted	Temporarily Restricted	Permanently Restricted	Total	
Support and revenue:					
Per-pupil allocation	\$ 30,595,836	\$ -	\$ -	\$ 30,595,836	\$ 29,400,516
Contributions	2,167,520	2,436,568	-	4,604,088	7,314,204
In-kind contributions	10,773	-	-	10,773	102,602
Development and other fees for services	353,000	-	-	353,000	200,000
Federal grants and awards	1,922,794	-	-	1,922,794	1,844,315
State grants and awards	-	-	-	-	36,283
Investment income	106,662	198	-	106,860	31,714
Other	485,958	-	-	485,958	149,157
Net assets released from restrictions	948,022	(948,022)	-	-	-
Total support and revenue	36,590,565	1,488,744	-	38,079,309	39,078,791
Expenses:					
Salaries and benefits	22,782,860	-	-	22,782,860	21,218,043
Supplies and services	11,928,369	-	-	11,928,369	12,414,805
Depreciation and amortization	2,739,241	-	-	2,739,241	2,568,381
Interest expense	947,062	-	-	947,062	864,868
Total expenses	38,397,532	-	-	38,397,532	37,066,097
Change in net assets	(1,806,967)	1,488,744	-	(318,223)	2,012,694
Net assets:					
Beginning	44,280,995	4,184,670	100,000	48,565,665	46,552,971
Ending	\$ 42,474,028	\$ 5,673,414	\$ 100,000	\$ 48,247,442	\$ 48,565,665

The SEED Foundation, Inc. and Subsidiaries
Consolidated Statement of Cash Flows
Fiscal Year-End: June 2017
(with Comparative Totals for 2016)

	2017	2016
Cash flows from operating activities:		
Change in net assets	\$ (318,223)	\$ 2,012,694
Adjustments to reconcile change in net assets to net cash provided by operating activities:		
Change in allowance for uncollectible pledges	-	4,000
Change in discount on promises to give	85,762	108,230
Depreciation	2,739,241	2,568,381
Amortization	147,072	106,347
Gain on disposal of assets	(1,000)	-
Realized and unrealized gain on investments	(81,392)	(15,974)
Change in deferred rent	(25,880)	24,305
Changes in assets and liabilities:		
Increase (decrease) in:		
Receivables	(2,557,190)	224,608
Prepaid expenses	26,176	117,957
Promises to give	272,683	1,353,595
Due from SEED Miami	297,454	(184,963)
(Decrease) increase in:		
Accounts payable and accrued expenses	17,119	(33,356)
Refundable advances	-	3,197
Due to SEED Miami	(25,000)	25,000
Net cash provided by operating activities	576,822	6,314,021
Cash flows from investing activities:		
Purchase of property and equipment	(1,364,991)	(1,741,520)
Purchase and reinvestments of investments	(46,533)	(14,579)
Proceeds from sale of investments	-	12,222
(Increase) decrease in restricted cash	(8,255)	109,817
Net cash used in investing activities	(1,419,779)	(1,634,060)
Cash flows from financing activities:		
Principal payments on loan payable	(1,696,460)	(150,372)
Principal payments on bonds and note payable	(1,621,996)	(1,550,000)
Principal payments on capital lease obligation	(38,775)	(38,545)
Net cash used in financing activities	(3,357,231)	(1,738,917)
Net (decrease) increase in cash and cash equivalents	(4,200,188)	2,941,044
Cash and cash equivalents:		
Beginning	10,761,928	7,820,884
Ending	\$ 6,561,740	\$ 10,761,928
Supplemental schedules of noncash investing activities and financing activities:		
Property and equipment included in accounts payable and accrued expenses	\$ 14,751	\$ 14,751
Property and equipment acquired under capital lease	\$ -	\$ 20,729
Supplemental disclosure of cash flow information:		
Cash payments for interest	\$ 957,310	\$ 870,001

OUR LEADERSHIP

THE SEED FOUNDATION BOARD OF DIRECTORS

Lesley D. Poole, CEO
Derek Abruzzese
Eric S. Adler, Chair
Ned Brody^
Chris Buchbinder, Vice-Chair
Aviva Budd^
Melanie Damian, Ex-Officio
Cheryl Dorsey
Vasco Fernandes
Ann Friedman, Vice-Chair
Elizabeth Galvin
Dean Garfield
Kelly Tubman Hardy^
Karim Khalifa
Nancy Lane^
Marc Miller
Rosalia Miller
Jamie Moeller
John Noel
Luis Perez
Lee Schorr
Eileen Shields-West
Rajiv Vinnakota
Vin Weber^
Paul White
Donald A. Brown, Director Emeritus
Helen A. Colson, Director Emeritus
Virginia W. Newmyer, Chair Emeritus
John H. Laporte, In Memoriam
Patricia B. Modell, In Memoriam
Harold A. Richman, In Memoriam

THE SEED SCHOOL OF WASHINGTON, D.C. BOARD OF TRUSTEES

Mecha Inman, Head of School
Len Armstrong^
Dennis Chestnut
Brooke B. Coburn
Vasco Fernandes, Chair
Henry R. O'Connor
Marina S. Ottaway
Lesley Poole
Tasha Poulson
Desa J. Sealy
Kenneth S. Slaughter
David J. Steinberg
Rajiv Vinnakota
Joseph L. Wright
Donald A. Brown, Trustee Emeritus
Marc E. Miller, Trustee Emeritus

* Members who joined after June 30
^ Members who are no longer on the board
+ Florida State Compliance completion pending

THE SEED SCHOOL OF MARYLAND BOARD OF TRUSTEES

Jon Tucker, Head of School
Earl Adams, Jr.
Eric S. Adler
Richard S. Burch
Joshua Burke
U.S. Congressman Elijah E. Cummings
Jennifer Curran
Steven Fedder
Dr. Jennifer C. Galambos, Ed.D.^
Kelly Tubman Hardy
Douglas M. Hoffberger
The Honorable Paula C. Hollinger
Sonya Hopson
Donald Hutchinson^
Dawn Kirstaetter
Heather Klink
Harry Lebow
Kevin Liles
Eric Loeb*
Stephen McManus
Marc E. Miller
Lesley Poole
Chris Rosenthal
Julie Rothman
Shane Smith*
Paul T. White, Chair
Bill Whiting
Edward J. Brody, Trustee Emeritus
C. Sylvia Brown, Trustee Emeritus
John H. Claster, Trustee Emeritus
Rajiv Vinnakota, Trustee Emeritus
John H. Laporte, In Memoriam
Patricia B. Modell, In Memoriam

THE SEED SCHOOL OF MIAMI BOARD OF TRUSTEES

Dr. Kara Locke, Head of School
Aviva Budd
Carol S. Cope*+
Thomas Culmo
Melanie Damian, Chair
Carlos de la Cruz, Jr.+
Virginia Emmons
Patrick Gannon^
Robert J. Gordon
Stuart Israelson
Tery J. Medina
Dorothy Terrell*+

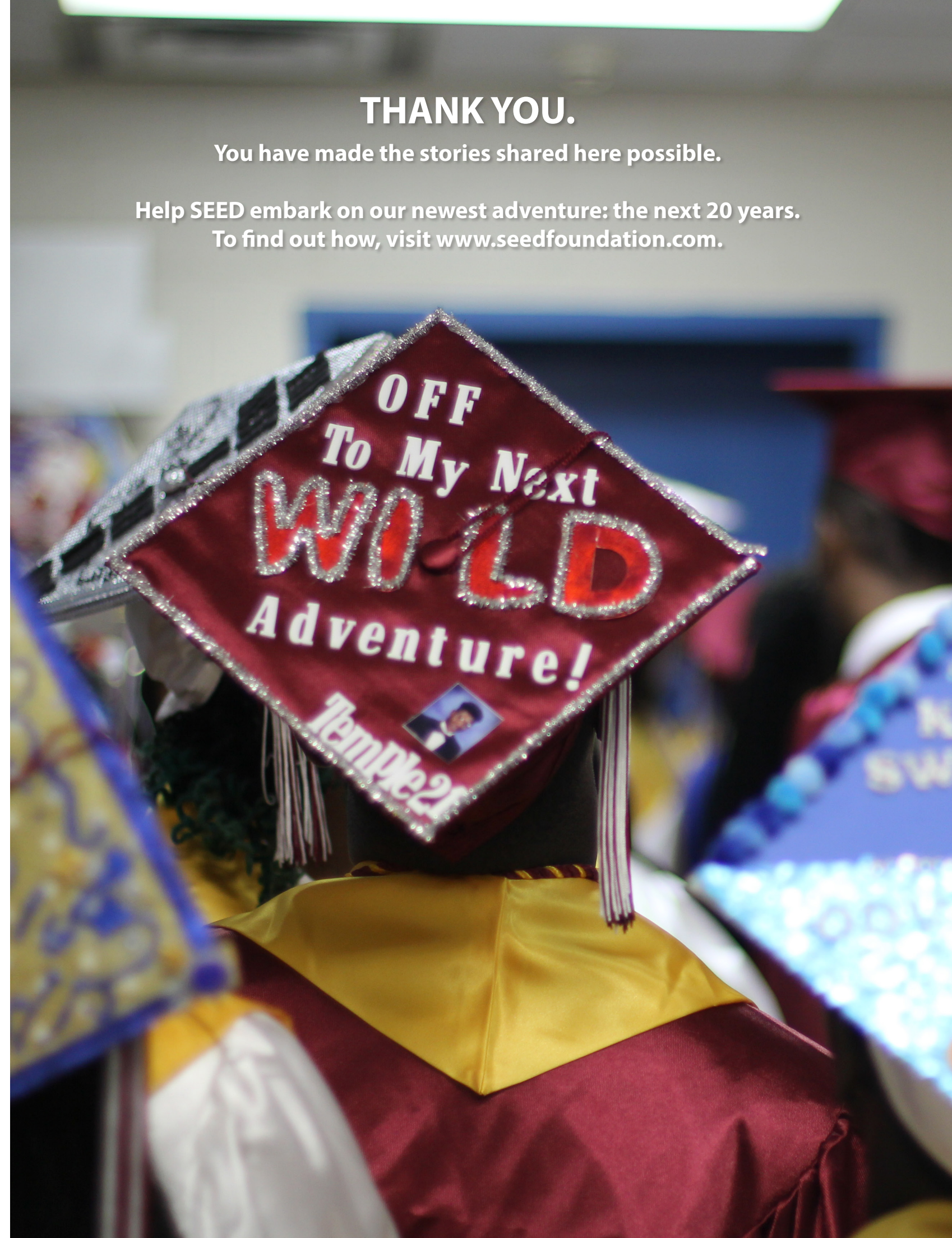
THE SEED SCHOOL OF MIAMI CAPITAL CAMPAIGN COMMITTEE

Debra Braman Wechsler
Carlos de la Cruz, Jr.
Melanie Damian
Jaret L. Davis^
Tia Diaz-Balart
Bob Dickinson
Virginia Emmons^
Nancy Hector
Marc and Marian Milgram^
Ron and Olivia Rothstein
Rajiv Vinnakota^

THANK YOU.

You have made the stories shared here possible.

Help SEED embark on our newest adventure: the next 20 years.
To find out how, visit www.seedfoundation.com.



THE SEED FOUNDATION

1776 Massachusetts Avenue, N.W., Suite 600
Washington, DC 20036
t: 202.785.4123 f: 202.785.4124
www.seedfoundation.com

THE SEED SCHOOL OF WASHINGTON, D.C.

4300 C Street, S.E.
Washington, DC 20019
t: 202.248.7773 f: 202.248.3022
www.seedschooldc.org

THE SEED SCHOOL OF MARYLAND

200 Font Hill Avenue
Baltimore, MD 21223
t: 410.843.9477 f: 410.843.9496
www.seedschoolmd.org

THE SEED SCHOOL OF MIAMI

1901 NW 127th Street
Miami, FL 33167
t: 855.818.7333 f: 305.503.7516
www.miami.seedschool.org